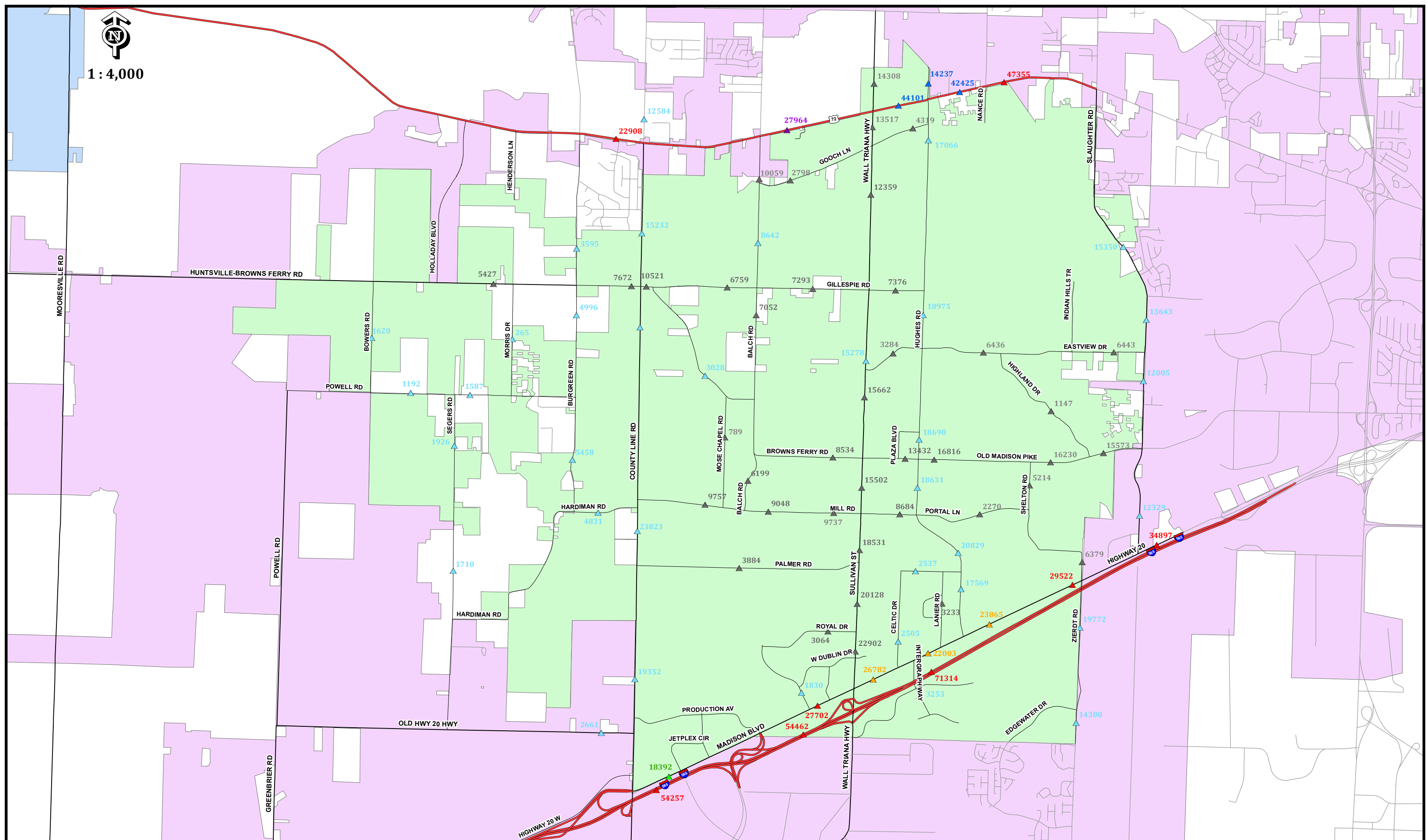




1 : 4,000



Legend

- ▲ Counts Taken In and Prior to 2010
- ▲ Counts Taken in 2011
- ▲ Counts Taken In 2012
- ▲ Counts Taken in 2013
- ▲ Counts Taken in 2014
- ▲ Counts Taken in 2016
- ▲ Counts Taken in 2017

Current Traffic Count Map

Date: 5/5/2017

